

Glass Liquid Level Gauges

LG20 Models

The LG20 Glass Liquid Level Gauge is a rugged flat glass gauge for mid-range pressure temperature applications. Standard construction includes a solid one-piece chamber machined from carbon steel with covers, toughened glass and chrome-molybdenum bolts and nuts. All metal parts are rustproofed. Recessed gasket seat prevents movement and ensures leak-free service.

Specifications

Connections: 1/2" FNPT top-bottom connections.

Pressure/Temperature Ratings: See Table 1

Gauge Length/Weight (See Table 2):

Gauge sections are available in 3-9 standard glass sizes. For longer size requirements, multiple units can be constructed with multiple vision slots in a continuous solid bar chamber.

Construction Materials:

Liquid Chamber: Carbon steel

Cover: Carbon steel

Bolts and Nuts: Plated carbon steel

Features

Quality Materials: Tempered glass conforms to BS3463, DIN 7081. All parts are ASTM grade and listed in ANSI 31.3.

Quality Assurance Testing: All gauges are hydrostatically tested to 1.5 times the rated pressure at 100° F (38° C).

No-Leak Design: Recessed gasket seat in chamber and cover prevents leaks often caused by shifting gaskets.

Liquid-Gas or Liquid-Liquid Interface Applications:

Available in either reflex (Figure 1) or transparent (Figure 2) styles to satisfy all application requirements.

NACE Compatible: Wetted parts conform to NACE MR-01-75 specifications for sour gas service.



LG20-T
(Transparent Style)



LG20-R
(Reflex Style)

All trademarks and service marks used in this document are the property of their respective owners. This Beaumont Manufacturing and Distribution Co. product is exclusively distributed for new equipment packages by FW Murphy in the Natural Gas Compression market.

Dimensions

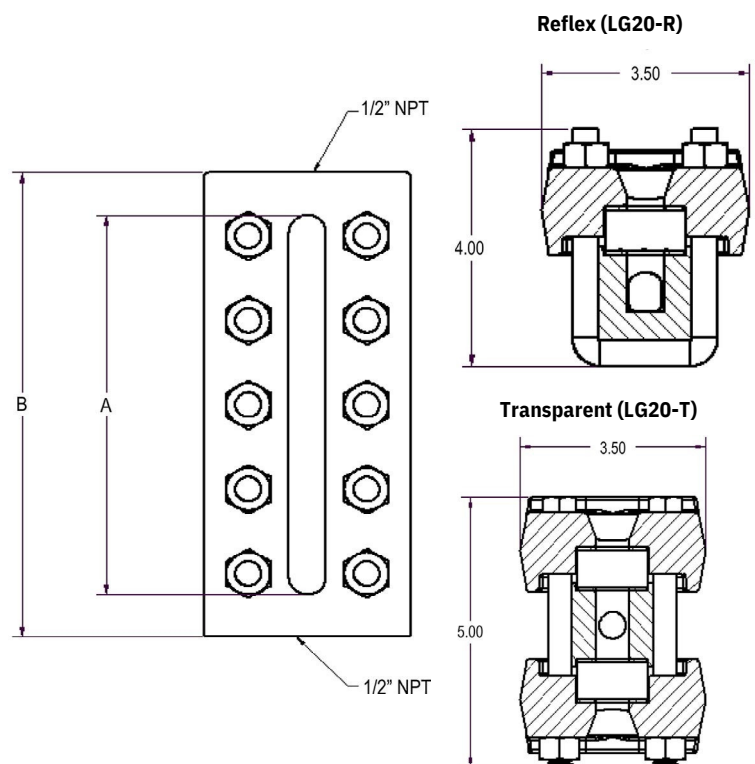


Table 1 - Pressure/Temperature Ratings

| Temp | Maximum Pressure (psi) | | | | | | | | | | | | | |
|-------|------------------------|------|------|------|------|------|------|-------------------|------|------|------|------|------|------|
| | Reflex Gauge | | | | | | | Transparent Gauge | | | | | | |
| | Glass Size | | | | | | | Glass Size | | | | | | |
| | 3 | 4 | 5 | 6 | 7 | 8 | 9 | 3 | 4 | 5 | 6 | 7 | 8 | 9 |
| 100°F | 2726 | 2610 | 2494 | 2349 | 2219 | 2103 | 2001 | 1755 | 1595 | 1508 | 1349 | 1247 | 1102 | 1001 |
| 200°F | 2596 | 2465 | 2349 | 2219 | 2088 | 2001 | 1900 | 1668 | 1552 | 1436 | 1305 | 1175 | 1059 | 957 |
| 300°F | 2436 | 2320 | 2204 | 2088 | 1972 | 1871 | 1755 | 1552 | 1450 | 1334 | 1218 | 1102 | 1001 | 899 |
| 400°F | 2248 | 2132 | 2030 | 1929 | 1813 | 1711 | 1610 | 1465 | 1349 | 1247 | 1146 | 1044 | 928 | 856 |
| 500°F | 2059 | 1958 | 1813 | 1755 | 1653 | 1552 | 1450 | 1349 | 1247 | 1160 | 1044 | 957 | 856 | 754 |
| 600°F | 1856 | 1755 | 1668 | 1552 | 1479 | 1378 | 1305 | 1175 | 1102 | 1015 | 928 | 856 | 754 | 682 |

Table 2 - Gauge Lengths/Weights

| Glass Size | (A) Visible Length | (B) Overall Length | Weight | | Assembly Center-to-Center* |
|------------|-----------------------|-----------------------|---------|-------------|----------------------------|
| | | | Reflex | Transparent | |
| 3 | 5 3/4 | "7 1/4" | 11 lbs. | 17 lbs. | 10 3/4" |
| 4 | 6 3/4 | "8 1/4" | 12 lbs. | 19 lbs. | 11 3/4" |
| 5 | 7 7/8 | "9 3/8" | 14 lbs. | 21 lbs. | 12 7/8" |
| 6 | 9 1/8 | "10 5/8" | 16 lbs. | 24 lbs. | 14 1/8" |
| 7 | 10 1/4 | "11 3/4" | 18 lbs. | 27 lbs. | 15 1/8" |
| 8 | 11 7/8 | "13 3/8" | 20 lbs. | 30 lbs. | 16 7/8" |
| 9 | 12 5/8 | "14 1/8" | 21 lbs. | 32 lbs. | 17 5/8" |
| 24 | 15" | 16 1/2" | 24 lbs. | 38 lbs. | 20" |
| 25 | 17 1/4 | "18 3/4" | 27 lbs. | 43 lbs. | 22 1/4" |
| 26 | 19 3/4 | "21 1/4" | 31 lbs. | 49 lbs. | 24 3/4" |

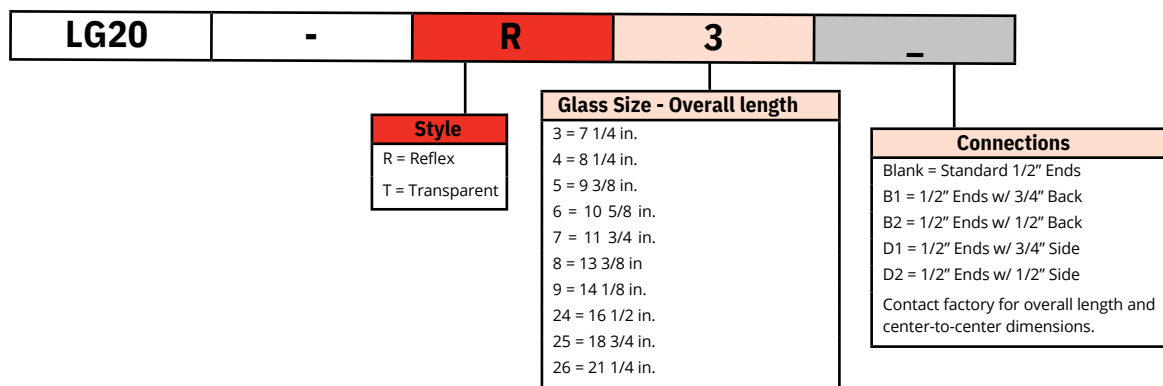
*Dimension when using 3/4" Pipe Nipple Connections to GV20s

How to Order

Please refer to the tables for dimensions and specifics.

Example Model No. **LG20-R3**

LG20 Medium Pressure Glass Liquid Level Gauge, 1/2" FNPT Connections, Reflex Style, Size 3 Glass, 5 3/4" Visible Length, 7 1/4" Overall Length, Standard 1/2" Ends



FW Murphy is the exclusive BMD distributor for new equipment packages.



CONTACT

✉ sales@rajkotmarinelc.ae
☎ +971 6 7487580
🌐 www.rajkotmarine.com

RAJKOT MARINE LLC

Jerf Industrial Area 1,
P.O Box 5861
Ajman, UAE

